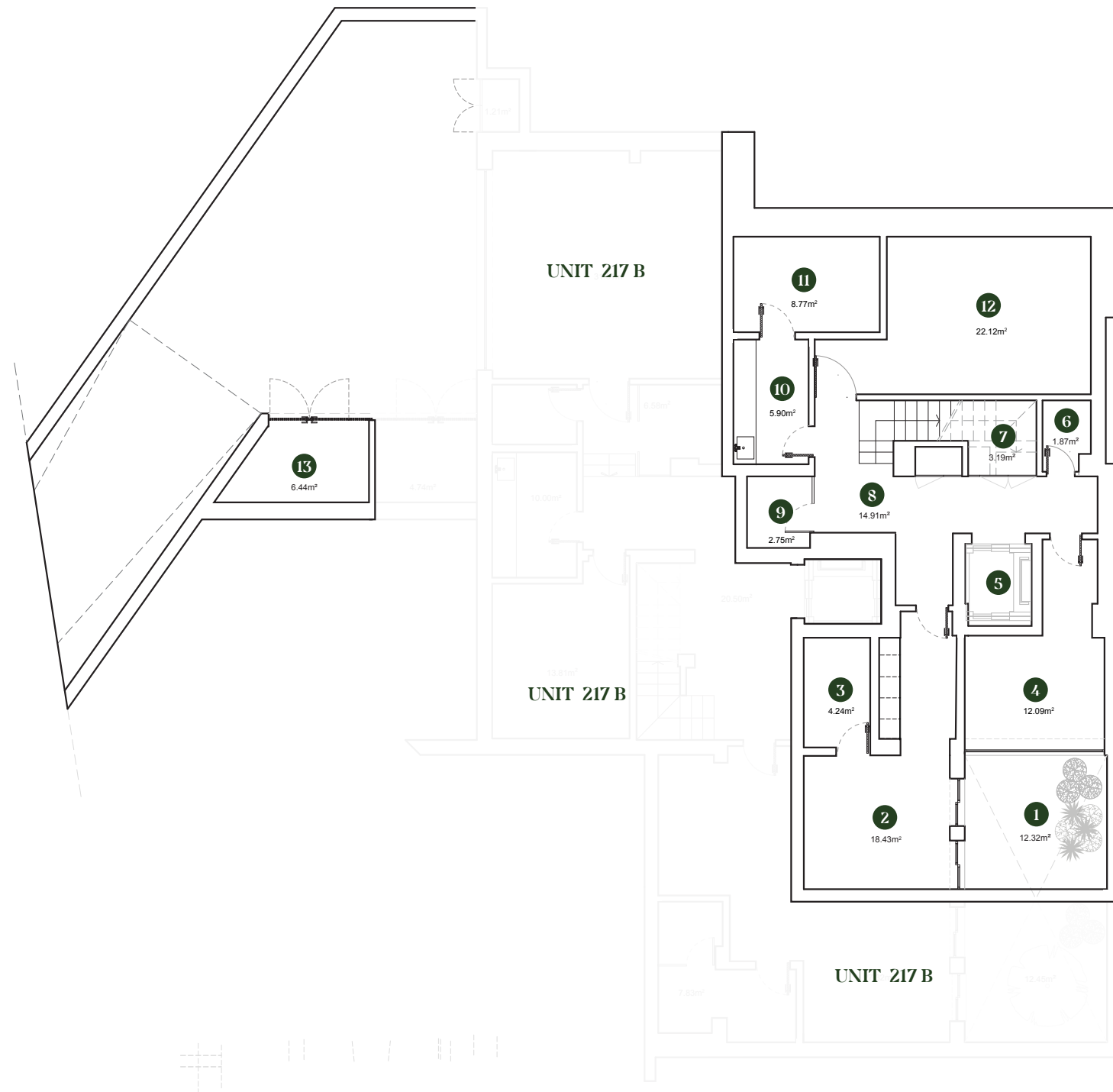


ONE GREEN WAY

RESIDENCES

Q9 \ UNIT 217 A

GARDEN RESIDENCE



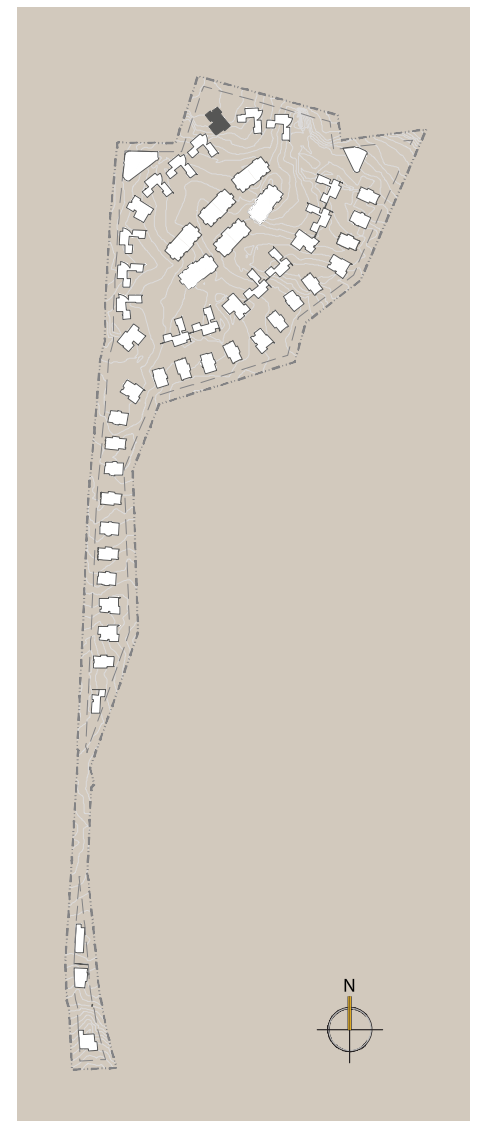
Q9 - UNIT 217 A

BASEMENT

BUILT AREA	275.35 m ²
BASEMENT AREA	133.22 m ²



The present floorplans are merely indicative or illustrative and are intended for promotional or commercial purposes. Its content is not binding and does not constitute and cannot be interpreted as an exact representation of reality, nor the expression or link of SRESPX – INVESTIMENTOS, S.A. in relation to any characteristics, qualities, quantities, attributes, or even as to the accuracy, positioning, orientation and/or dimensions or areas of the objects or parts represented or integrating therein, which may be subject to alteration by SRESPX – INVESTIMENTOS, S.A. and/or not coincide with the licensed and/or built.



ONE GREEN WAY

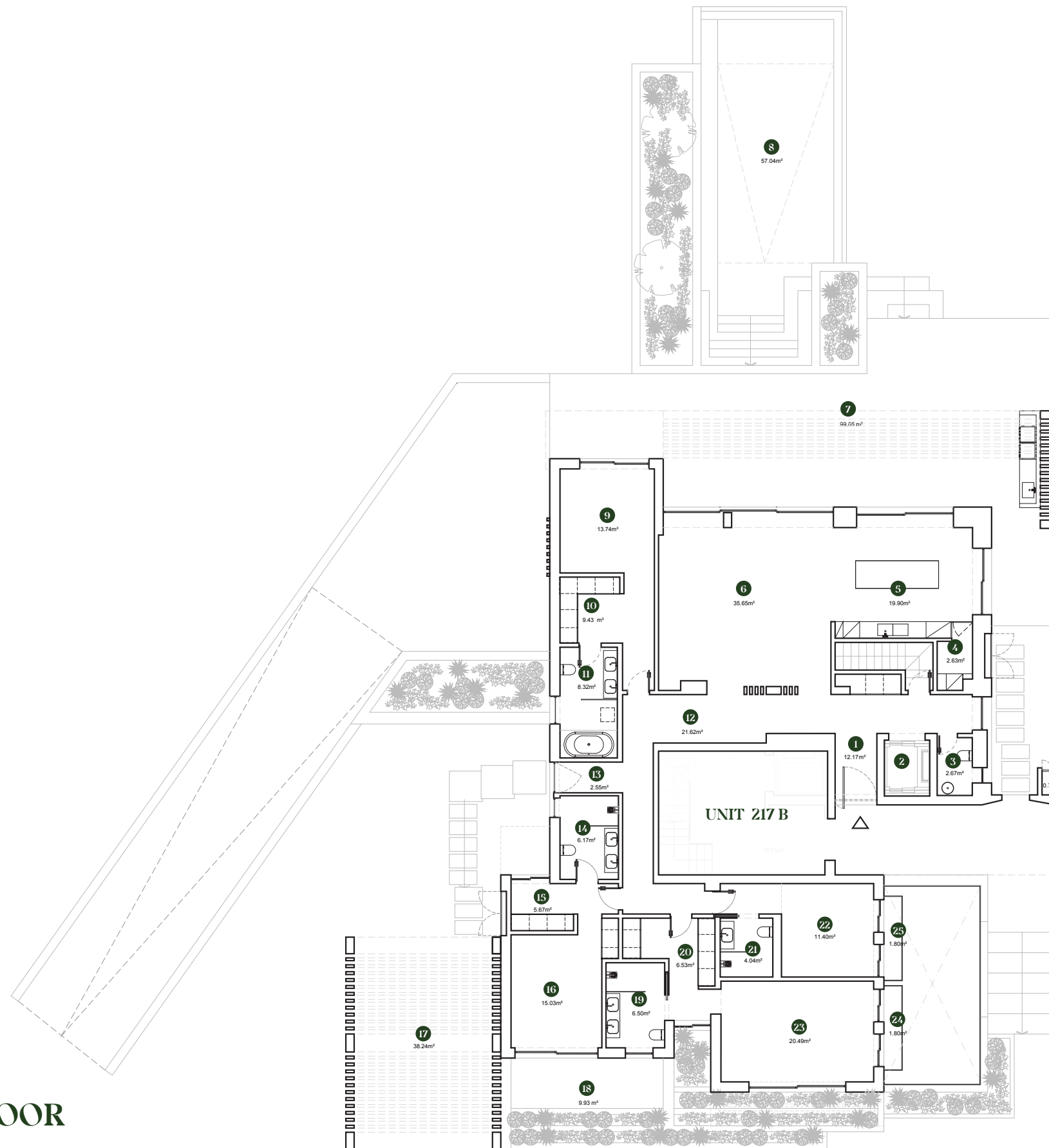
RESIDENCES

Q9 \ UNIT 217 A

GARDEN RESIDENCE

Q9 - UNIT 217 A

GROUND FLOOR



BUILT AREA	275.35 m ²
GROUND FLOOR AREA	275.35 m ²



The present floorplans are merely indicative or illustrative and are intended for promotional or commercial purposes. Its content is not binding and does not constitute and cannot be interpreted as an exact representation of reality, nor the expression or link of SRESPX – INVESTIMENTOS, S.A. in relation to any characteristics, qualities, quantities, attributes, or even as to the accuracy, positioning, orientation and/or dimensions or areas of the objects or parts represented or integrating therein, which may be subject to alteration by SRESPX – INVESTIMENTOS, S.A. and/or not coincide with the licensed and/or built.

