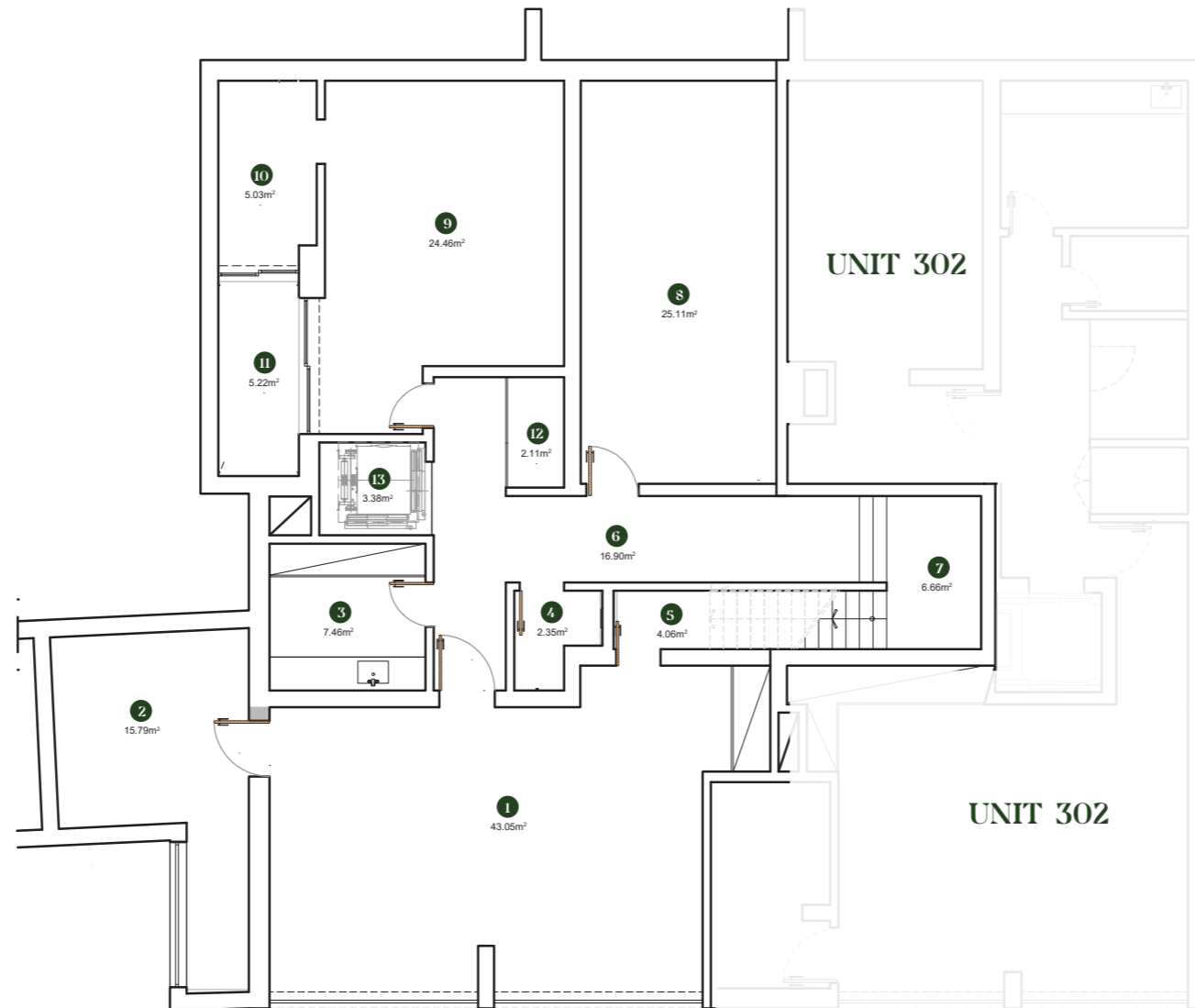


ONE GREEN WAY

RESIDENCES

GARDEN RESIDENCE Q2 \ UNIT 301

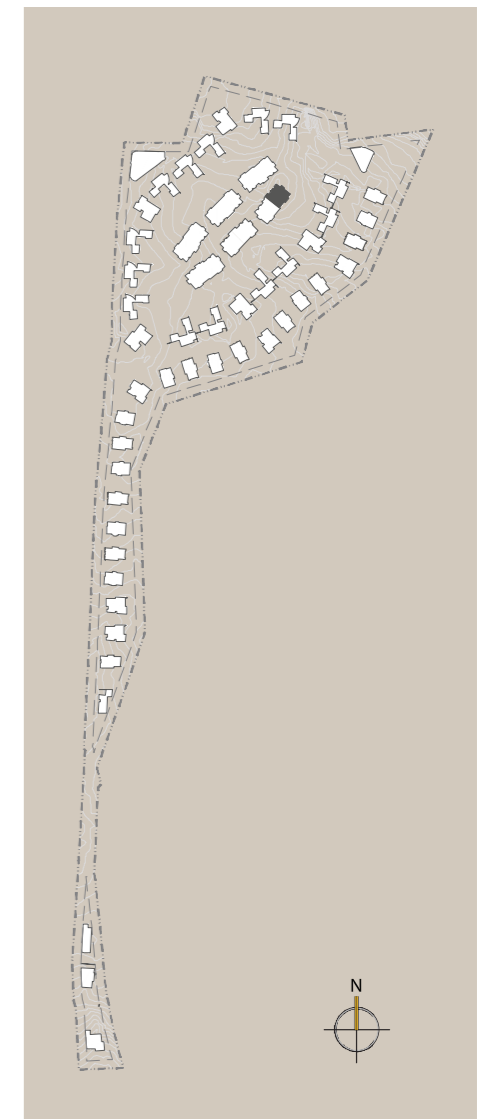


Q2 - UNIT 301 BASEMENT

BUILT AREA	264.66 m ²
BASEMENT AREA	194.91 m ²



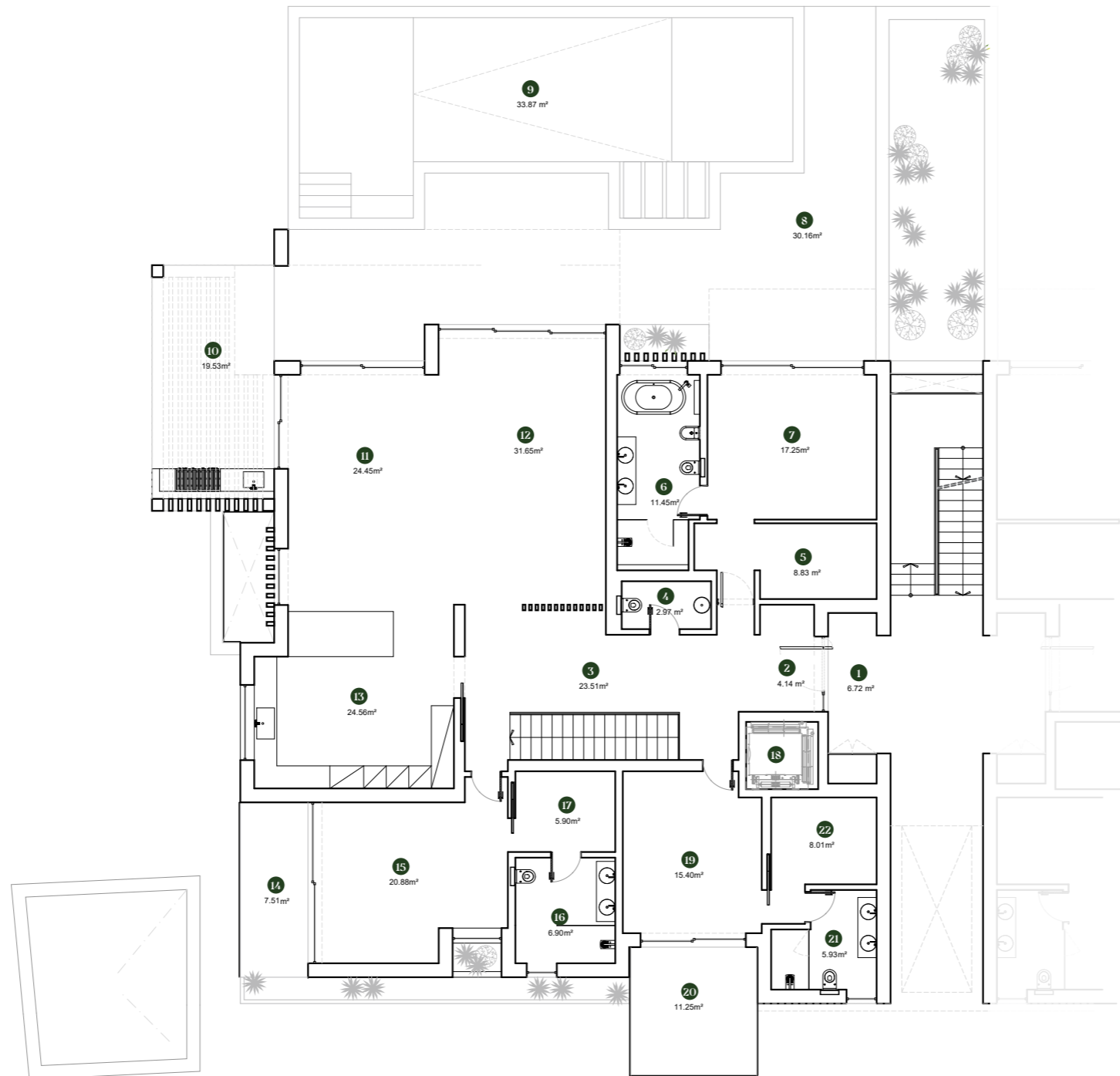
The present floorplans are merely indicative or illustrative and are intended for promotional or commercial purposes. Its content is not binding and does not constitute and cannot be interpreted as an exact representation of reality, nor the expression or link of SRESPX – INVESTIMENTOS, S.A. in relation to any characteristics, qualities, quantities, attributes, or even as to the accuracy, positioning, orientation and/or dimensions or areas of the objects or parts represented or integrating therein, which may be subject to alteration by SRESPX – INVESTIMENTOS, S.A. and/or not coincide with the licensed and/or built.



ONE GREEN WAY

RESIDENCES

GARDEN RESIDENCE Q2 \ UNIT 301



Q2 - UNIT 301

GROUND FLOOR

BUILT AREA	264.66 m ²
GROUND FLOOR AREA	264.66 m ²



The present floorplans are merely indicative or illustrative and are intended for promotional or commercial purposes. Its content is not binding and does not constitute and cannot be interpreted as an exact representation of reality, nor the expression or link of SRESPX – INVESTIMENTOS, S.A. in relation to any characteristics, qualities, quantities, attributes, or even as to the accuracy, positioning, orientation and/or dimensions or areas of the objects or parts represented or integrating therein, which may be subject to alteration by SRESPX – INVESTIMENTOS, S.A. and/or not coincide with the licensed and/or built.

