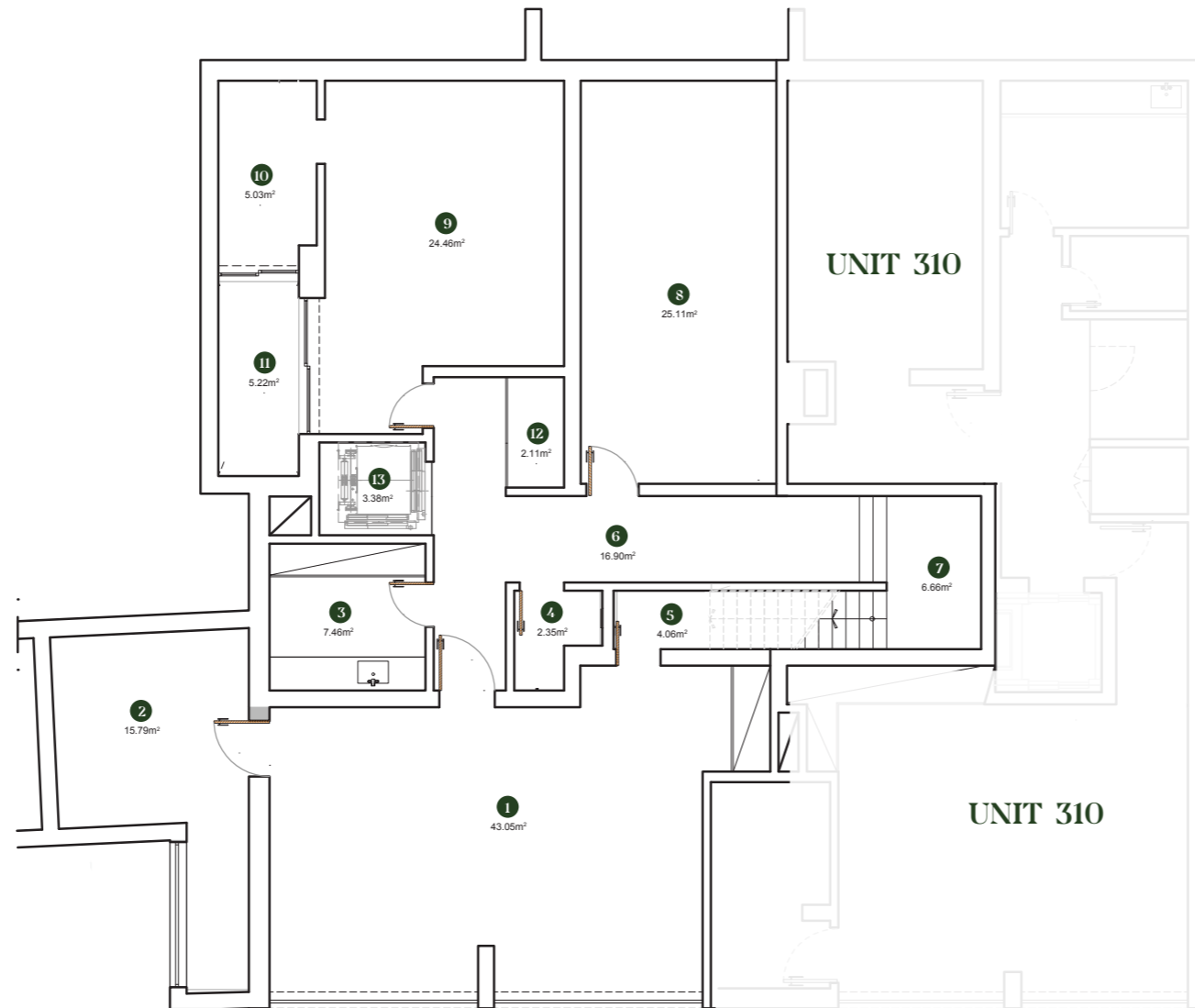


# ONE GREEN WAY

RESIDENCES

## GARDEN RESIDENCE Q3 \ UNIT 309

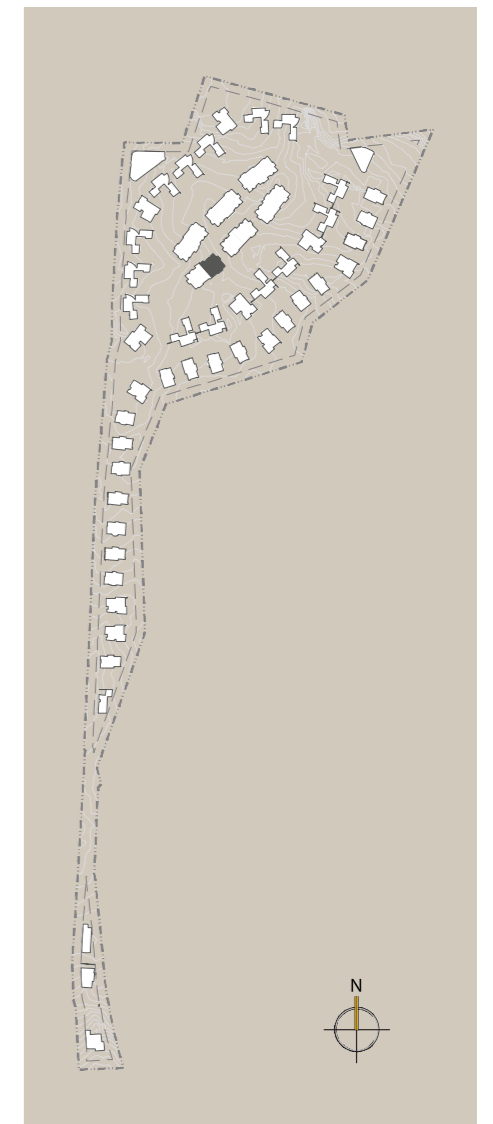


### Q3 - UNIT 309 BASEMENT

BUILT AREA	264.66 m <sup>2</sup>
BASEMENT AREA	194.91 m <sup>2</sup>



The present floorplans are merely indicative or illustrative and are intended for promotional or commercial purposes. Its content is not binding and does not constitute and cannot be interpreted as an exact representation of reality, nor the expression or link of SRESPX – INVESTIMENTOS, S.A. in relation to any characteristics, qualities, quantities, attributes, or even as to the accuracy, positioning, orientation and/or dimensions or areas of the objects or parts represented or integrating therein, which may be subject to alteration by SRESPX – INVESTIMENTOS, S.A. and/or not coincide with the licensed and/or built.

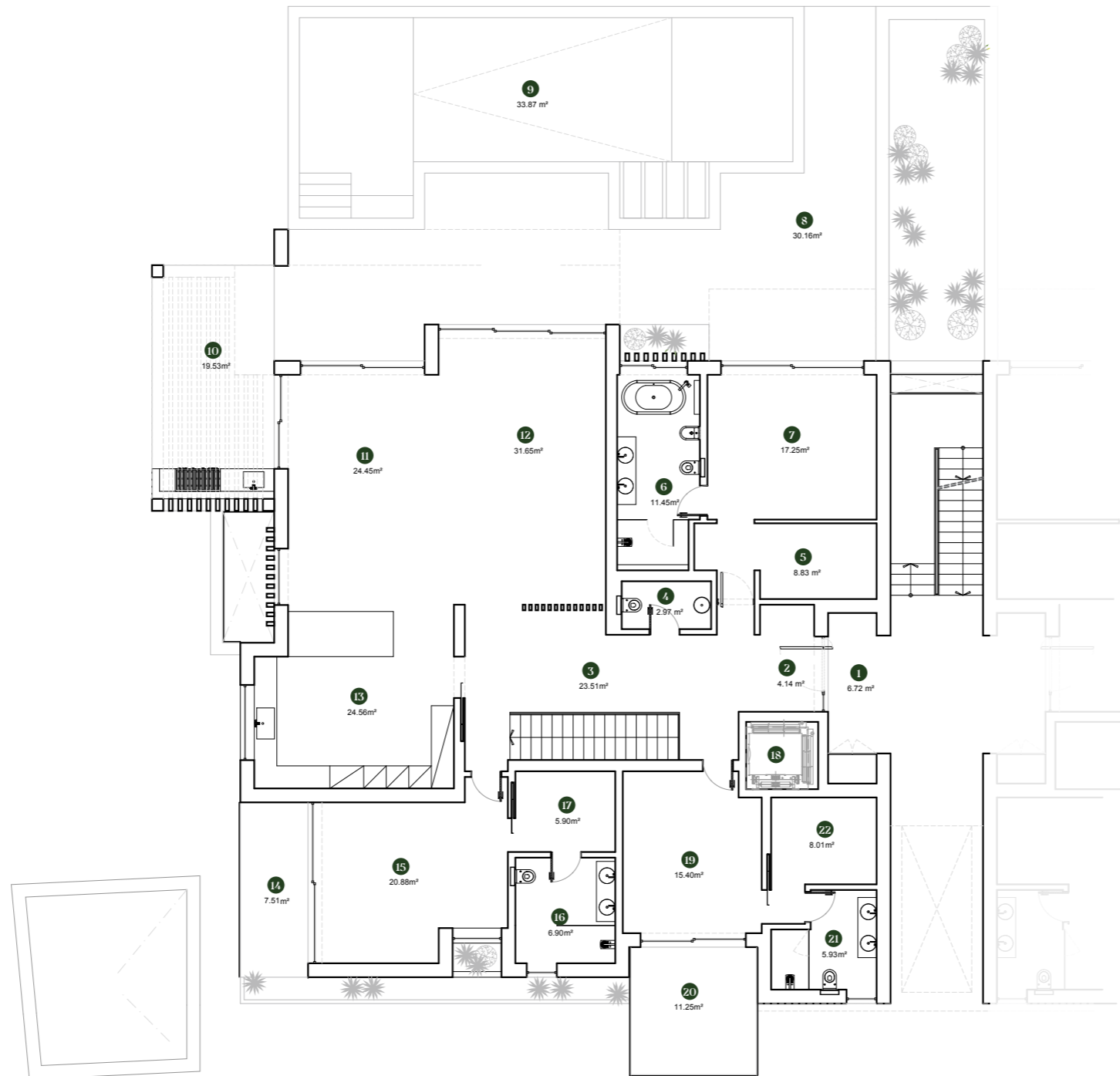


# ONE GREEN WAY

RESIDENCES

## GARDEN RESIDENCE

### Q3 \ UNIT 309



Q3 - UNIT 309

## GROUND FLOOR

BUILT AREA	264.66 m <sup>2</sup>
GROUND FLOOR AREA	264.66 m <sup>2</sup>



The present floorplans are merely indicative or illustrative and are intended for promotional or commercial purposes. Its content is not binding and does not constitute and cannot be interpreted as an exact representation of reality, nor the expression or link of SRESPX – INVESTIMENTOS, S.A. in relation to any characteristics, qualities, quantities, attributes, or even as to the accuracy, positioning, orientation and/or dimensions or areas of the objects or parts represented or integrating therein, which may be subject to alteration by SRESPX – INVESTIMENTOS, S.A. and/or not coincide with the licensed and/or built.

